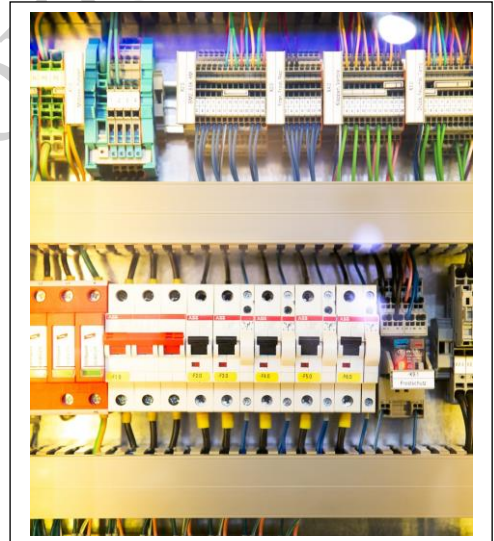
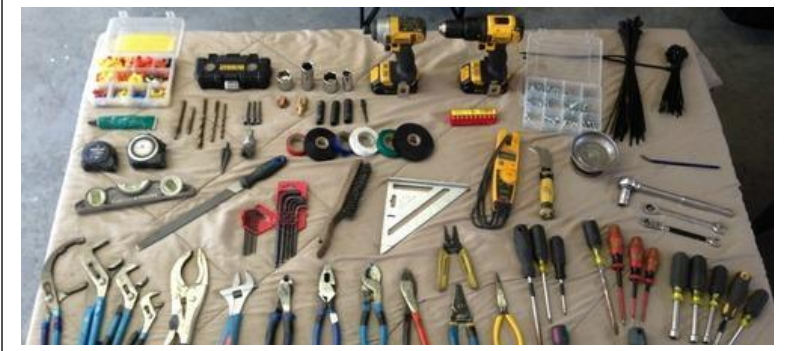


# PRODUCT GUIDE

## ITI WORKSHOP TOOLS / EQUIPMENTS



## DELTA ELECTRONICS

**Address: 159, Suyog Nagar, Opp. NIT Garden,  
Near Mania Fitness Gym, Ring Road, Nagpur-15  
Ph : 0712-3550901 Mob: 9823151679 , 9270509886  
Email : [deltaelectronics22@gmail.com](mailto:deltaelectronics22@gmail.com),  
Website : [deltaelectronicsngp.com](http://deltaelectronicsngp.com)**

DELTA ELECTRONICS  
159, Suyog Nagar, Opp. NIT Garden , Ring Road , Nagpur-15.  
Mob No 9823151679, 9270509886  
Email- [deltaelectronics22@gmail.com](mailto:deltaelectronics22@gmail.com) ;  
Website : [deltaelectronicsngp.com](http://deltaelectronicsngp.com)



## ITI WORKSHOP TOOLS / EQUIPMENTS

- Steel Tape 10 meter length
- Plier insulated 150 mm
- Plier side cutting 150 mm
- Screw driver 100 mm
- Screw driver 150 mm
- Electrician connector
- Screw driver
- Insulated handle
- Heavy duty screw driver
- Electrician screw driver 250 mm thin stem insulated handle
- Punch center 150 mm X 9 mm
- Knife double bladed electrician
- Neon tester
- Rule steel 300 mm
- Hammer, cross peen with handle
- Hammer ball peen with handle
- Gimlet 6 mm
- Bradawl
- Scriber 150 mm X  $\text{Æ}$  4 mm (Knurled center position)
- Pincre 150 mm
- C. Clamps 200 mm, 150 mm & 100 mm
- Spanner 150 mm adjustable 15 degree
- Blow lamp 0.5 liter
- Melting pot
- Ladle
- Chisel cold firmer 25 mm X 200 mm
- Chisel 25 mm & 6 mm
- Drill machine hand 0 to 6 mm capacity
- Electric drill machine portable 6 mm capacity
- Pillar electric drill machine 12 mm capacity
- Allen key
- Oil can 0.12 liter
- Grease gun
- Outside micrometer 0 to 25 mm



---

### DELTA ELECTRONICS

159, Suyog Nagar, Opp. NTI Garden, Ring Road, Nagpur-15.

Mob No 9823151679, 9270509886

Email- [deltaelectronics22@gmail.com](mailto:deltaelectronics22@gmail.com) ;

Website : [deltaelectronicsngp.com](http://deltaelectronicsngp.com)

- Bench grinder motorized
- Rawl plug tool & bit
- Pulley puller
- Bearing puller 4
- Hygrometer
- Thermometer 0 to 100 Deg. Centigrade
- Scissors blade 150 mm
- Crimping tool
- Wire stripper 20 cm
- Chisel cold flat 12 mm
- Mallet hard wood 0.50 Kg.
- Hammer Exeter type 0.40 Kg.
- Hacksaw
- Square try 150 mm blade
- Divider 150 mm, Outside& Inside caliper
- Plier flat nose 100 mm
- Plier gas round nose 100 mm
- Tweezers 100 mm
- Snip straight & bent 150 mm
- Spanner D.E. metric standard set
- Drill hand brace 0 to 100 mm
- Drill S.S. Twist block 2 mm, 5 mm, 6mm
- Plane, smoothing cutters, 50 mm
- Gauge, wire imperial
- File flat 200 mm
- File half round 200 mm
- File round 200 mm
- File flat
- File flat 250 mm Bastard
- File flat 250 mm smooth
- Rasp, half round 200 Bastard
- Iron, soldering 25 watt, 65 watt, 125 watt
- Copper bit soldering iron 0.25 Kg.
- Desoldering gun
- Vice hand 50 mm jaw
- Vice table jaw 100 mm
- Pipe cutter to cut pipes up to 5 cm
- Pipe cutter to cut pipes above 5 cm
- Stock and die set for 20 mm to 50 mm
- G.I. pipe
- Ohm Meter series type & shunt type
- Stock and dies conduit




---

## DELTA ELECTRONICS

159, Suyog Nagar, Opp. NTI Garden , Ring Road , Nagpur-15.

Mob No 9823151679, 9270509886

Email- [deltaelectronics22@gmail.com](mailto:deltaelectronics22@gmail.com) ;

Website : [deltaelectronicsngp.com](http://deltaelectronicsngp.com)

- Multi meter 0-1000 M Ohms,
- Digital Multi meter (3 ½ digits)
- A.C. Voltmeter
- Milli Voltmeter centre zero 100-0-100 m Volt
- D.C. Milli ammeter 0-500mA
- Ammeter MC 0-15-25A
- A.C. Ammeter M.I. 0-15-25A
- K.W. Meter 0-1-3 kW
- A.C. Energy Meter (Single Phase 5 amps, 230 Volts)
- Single Phase power factor meter
- Frequency Meter
- Tacho meter with stop watch
- Current Transformer
- Potential Transformer
- Growler
- Tong Tester/Clamp Meter 0-100 Amps
- Megger 500 Volts
- Wheatstone bridge complete with galvanometer and battery
- Contactor 3-f, 440V, 16 amps. 2 NO & 2 NC auxiliary contacts
- Contactor 3-f, 440V, 32 amps. 2 NO & 2 NC auxiliary contacts
- Limit switche
- Rotary switch 16 A
- Load band 5 kW (Lamp/Heater type)
- Brake test arrangement with two spring balance
- Knife Switch DPDT fitted with fuse terminals
- Knife Switch TPDT fitted with fuse terminals
- DC power supply 0-100 volts, 5 Amps
- Inverter 1 KVA, Input 12 Volts DC, Output 220 Volts AC,battery (without battery)
- Voltage stabilizer – Input 150 – 230 Volts AC, Output 220Volts AC
- Rheostat 0-1 W, 5 Amps, 0-10 W, 5 Amps, 0-25 W, 1 Amps, 0- 300 W, 1 Amps
- Domestic Appliances:
  - Electric hot plate 1500 watt, 220 Volts with temperaturecontrol
  - Electric kettle, 1000 watt, 230 Volts
  - Electric iron, 1200 watts, 230 Volts with temperaturecontrol
  - Immersion heater 750/1000/1500W-230 Volts
  - Geyser 25 litre 240 Volts (storage type)
  - AC Fan
  - Mixer Grinder
  - Flux meter
  - Laboratory type induction coil 6 Volts to 800 – 10000 Volts
  - 3 – point DC Starters
  - 4 – point DC Starters




---

## DELTA ELECTRONICS

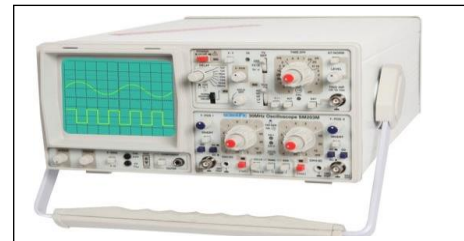
159, Suyog Nagar, Opp. NTI Garden , Ring Road , Nagpur-15.

Mob No 9823151679, 9270509886

Email- [deltaelectronics22@gmail.com](mailto:deltaelectronics22@gmail.com) ;

Website : [deltaelectronicsngp.com](http://deltaelectronicsngp.com)

- Cut out, Reverse current, Overload voltage, Under voltage relays
- Starters for 3 - f, 400V, 50 Cycles, 2 to 5 H.P. AC motors
- Direct Online starter (BENTEX MAKE)
- Star Delta Starter with Manual, Semi-Auto & Automatic BENTEX
- Auto transformer type Starter
- Electrical Machine Trainer with Control Panel
- Motor – Generator Set (AC to DC)
- (with penal stand)
- Motor – Generator Set (DC to AC)
- (with penal stand)
- Used DC Generators – Series, Shunt and Compound type for overhauling practice.
- DC Shunt Generator, 2.5 kW, 220 Volts with Control Panel
- DC Compound Generator, 2.5 kW, 250 Volts, with Control Panel including field Rheostat, Voltmeter, Ammeter and Circuit Breaker.
- DG Set 5KVA 3 phase
- Motor Series DC, 220 Volts, 0.5 to 2 H.P. coupled with Mechanical Load 1 5500.00 5500.00
- Motor Shunt DC, 220 Volts, 2 to 3 H.P.
- Motor DC Compound wound, 220 Volts, 2 to 3 H.P. with Star/Delta Starter and triple Pole Iron Clad Switch Fuse
- Motor AC Squirrel cage, 3-f, 400 Volts, 50 Cycles, 2 to 3 H.P. with Star/Delta starter and Triple Pole Iron Clad Switch Fuse.
- Motor AC phase-wound slip ring type 5 H.P., 400 Volts, 3-f, 50 Cycles with Starter Switch
- Motor AC Series type 230 Volts, 50 Cycles, ¼ H.P. with Mechanical Load
- Motor AC 1-f, 230 Volts, 50 Cycles, 1 H.P. capacitor type with Starter Switch.
- Motor Universal 230 Volts, 50 Cycles, ¼ H.P. with Starter/Switch
- Stepper Motor with Digital Controller
- Shaded pole motor
- Transformer 1-f, 1 KVA, 230 / 115-50-24-12 Volts, 50 cycles
- Transformer 3-f, 5 KVA, 440/230 Volts, 50 Cycles, Delta/Star, Shell type Oil Cooled
- Variable Auto Transformer 0-250 Volts, 8 Amps
- Oscilloscope – Dual trace, 30 MHz
- Function Generator
- Discrete component trainer
- Linear I.C. Trainer
- Digital I.C. Trainer
- Bath Impregnating




---

## DELTA ELECTRONICS

159, Suyog Nagar, Opp. NTI Garden, Ring Road, Nagpur-15.

Mob No 9823151679, 9270509886

Email- [deltaelectronics22@gmail.com](mailto:deltaelectronics22@gmail.com) ;

Website : [deltaelectronicsngp.com](http://deltaelectronicsngp.com)

- Oven Stoving
- Oil Testing Kit
- Battery Charger with Variable output 1 kW
- Hydrometer
- A.C.B. (Air Circuit Breaker) 5 KVA
- M.C.B. (Miniature Circuit Breaker) 16 amps
- Thyristor/IGBT controlled DC motor drive.  
1 H.P. with TachoGenerator feedback arrangement(with penal stand)
- Thyristor/IGBT controlled AC motor drive with VVVF, 3-f, 2H.P. (with penal stand)
- Working Bench
- Fire Extinguisher
- Fire Buckets



DELTA ELECTRONICS

---

### DELTA ELECTRONICS

159, Suyog Nagar, Opp. NTI Garden, Ring Road, Nagpur-15.

Mob No 9823151679, 9270509886

Email- [deltaelectronics22@gmail.com](mailto:deltaelectronics22@gmail.com) ;

Website : [deltaelectronicsngp.com](http://deltaelectronicsngp.com)